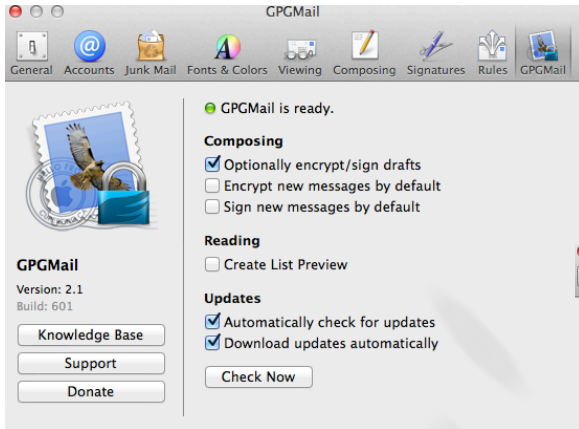
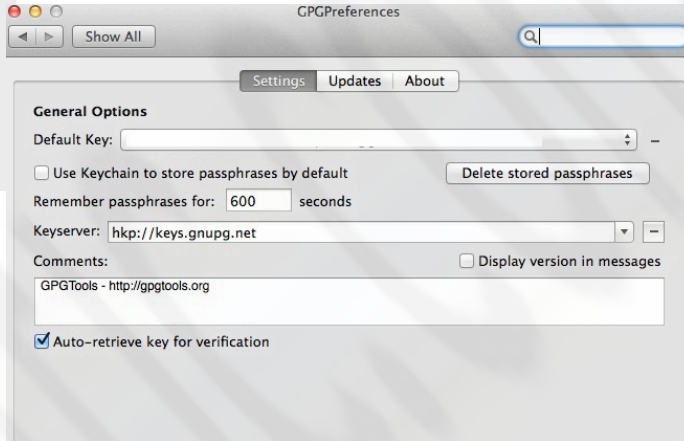


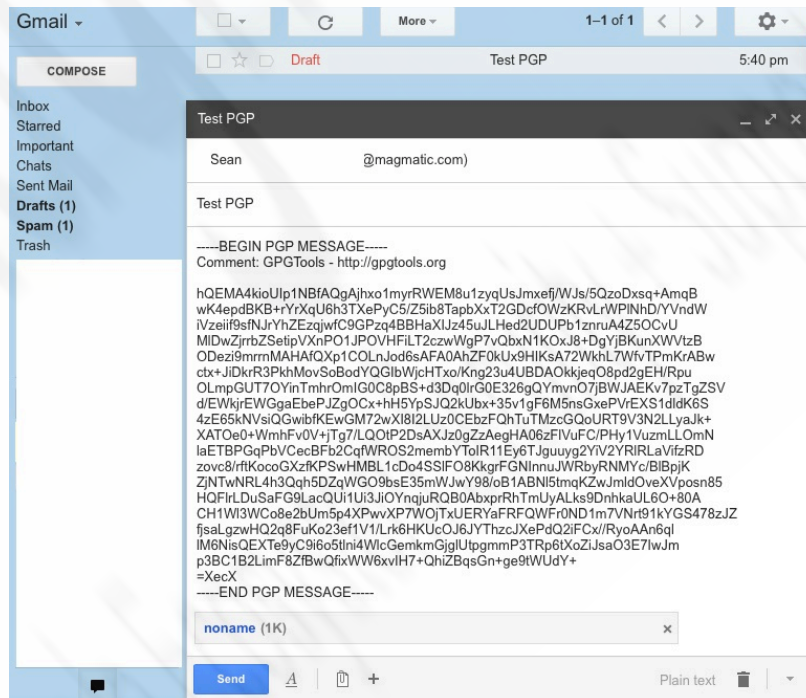
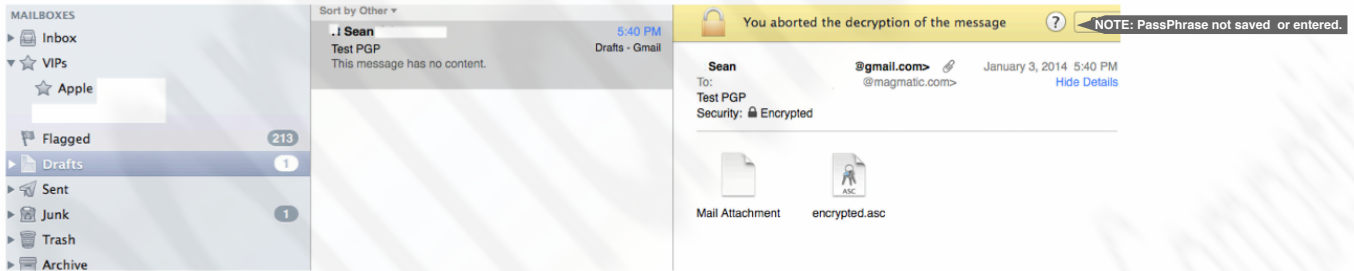
Encryption is only as good as the administrator that configures it.
 Use GPGMail to configure how DRAFT encrypted messages are handled by imap including in Gmail.
 There is only bad configurations, not a bug or issue.



Review the composing setting in Mail.app and in GPGMail.app



Do not forget you can set how passphrases are stored and clear them if cached.



Proper configuration of GPGMail ensures that drafts for imap including Gmail are encrypted,

IMAP Access: (access Gmail from other clients using IMAP) Learn more
 Status: IMAP is enabled
 Enable IMAP
 Disable IMAP